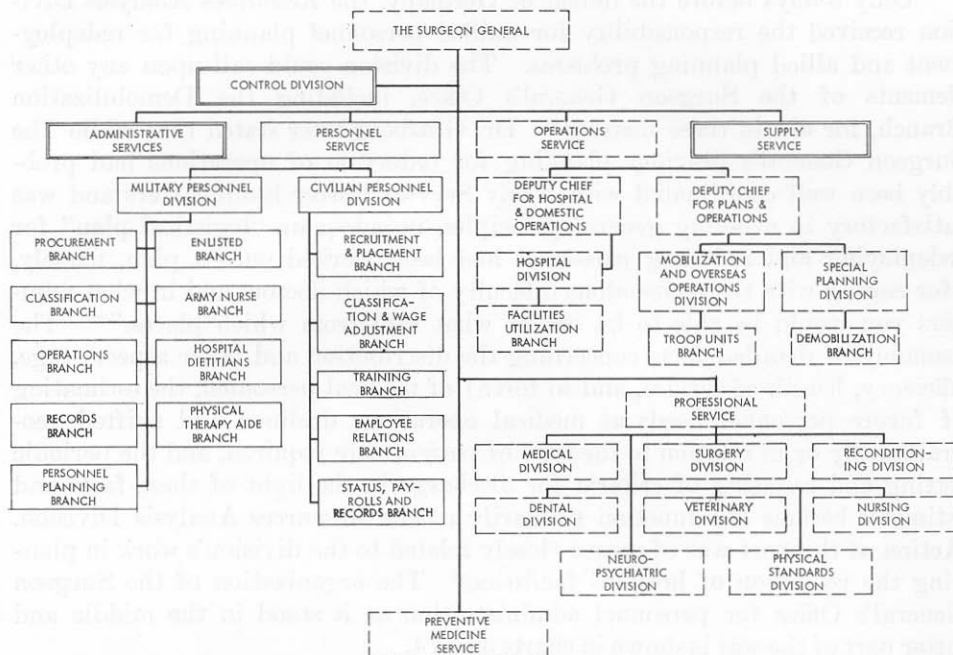


CHART 3.—*Organization of the Surgeon General's Office for personnel administration, February 1944*



ELEMENTS WHOLLY CONCERNED WITH PERSONNEL ADMINISTRATION.

ELEMENTS PARTLY CONCERNED WITH PERSONNEL ADMINISTRATION.

ELEMENTS NOT CONCERNED WITH PERSONNEL ADMINISTRATION.