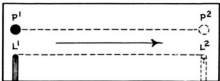


A.-TRAVEL OF SHADOWS WHEN PALPATOR IS ON LOWER PLANE THAN PROJECTILE



B.-TRAVEL OF SHADOWS WHEN PALPATOR IS RAISED HIGHER THAN PROJECTILE TUBE BEING SHIFTED IN CONTRARY DIRECTION



C.-TRAVEL OF SHADOWS WHEN PALPATOR AND PROJECTILE ARE ON SAME LEVEL

FIG. 117.—Screen appearance during different steps of the parallax method