

4. HIGH STRUCTURES
LARGE BLOOD VESSEL
TRAUMA, ETC.

5 CHEST WOUND THE
DANGEROUS AREA

7. COMPOUND FRACTURE OF
TIBIA BONE WHICH STILL HAS
A HIGH MORTALITY RATE.

1 HEART & BRANCH OF GREAT BLOOD VESSEL
LYING AND BEHIND CHEST WALL WHICH
AT THIS PART PRESENTS VERY LITTLE
RESISTANCE TO SPENTERS. THE MOST
DANGEROUS AREA BOUNDED BY --- LINE.

2 LARGE BLOOD VESSEL MARKED ---
LYING IN AN UNPROTECTED POSITION.

8 MAIN VEIN OF LIMB WHICH INJURY
WOULD CAUSE SEVERE & DANGEROUS HEMORRHAGE
BUT NOT NECESSARILY IMMEDIATE DEATH.

NOTE THE LARGE VEIN IS AT THE
BACK OF THE ARMOR AND ARE THEREFORE
BETTER PROTECTED

3 IMPORTANT STRUCTURES (VICINAL)
INJURY BY A SMALL SPENTER WOULD CAUSE
A SEVERE WOUND BUT NOT NECESSARILY
A HIGH IMMEDIATE MORTALITY.

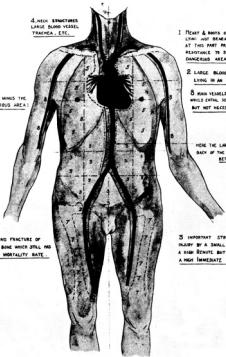


FIG. 2.—Diagram showing areas of danger. This and Figures 4 and 5 were made available through the courtesy of Capt. I. S. St. C. Ross, Trench Warfare Division, Ministry of Munitions, London